

How To

CREATE A CODE SET

(CC) 2010 BY MATTHEW WEINSTEIN, SOME RIGHTS RESERVED

Published by mayday Software;

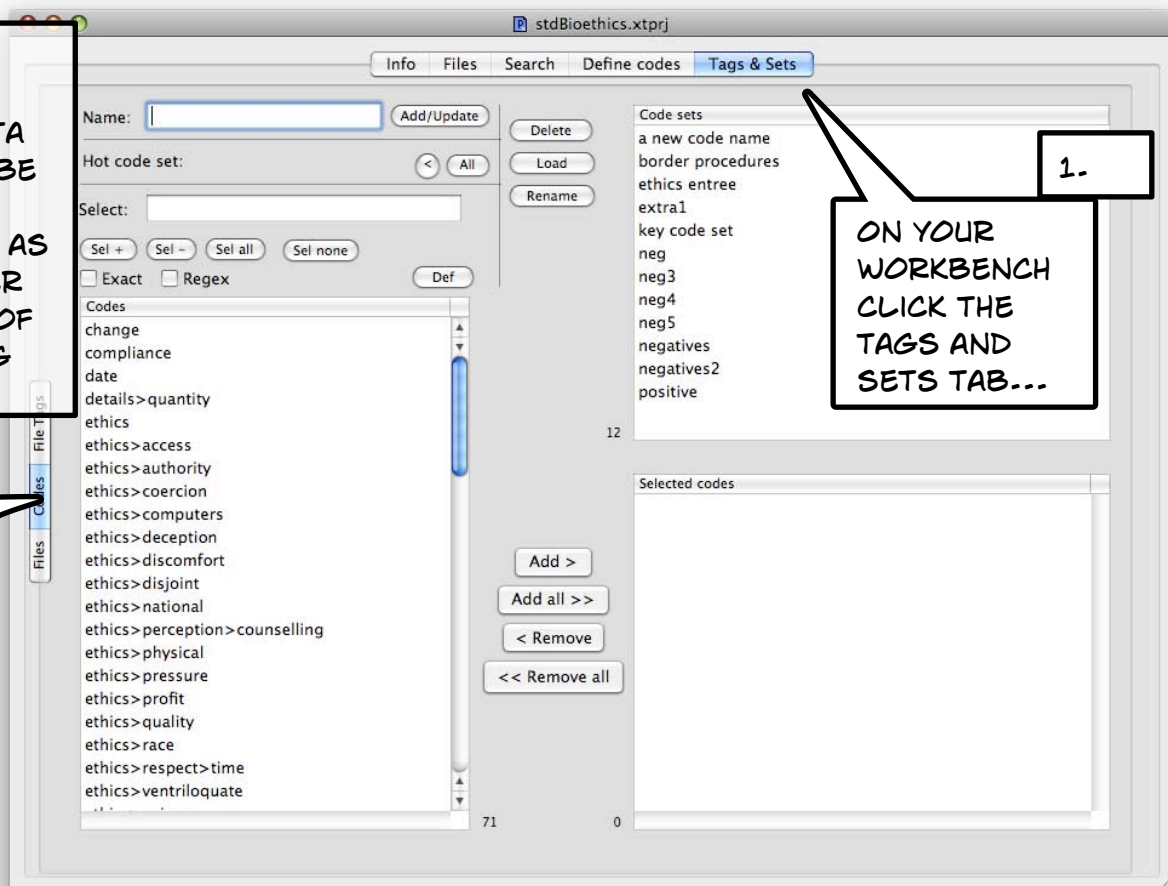


This work is licensed under a Creative Commons Attribution-Non Derivative Works 3.0 License.

tamsZine #4

CODE SETS ARE ARBITRARY GROUPINGS OF DATA CODES WHICH CAN BE USED TO ANALYZE RESULTS AS WELL AS PROVIDE A SMALLER WORKING SUBSET OF CODES FOR CODING

...AND THEN THE CODES TAB ON THE LEFT HAND SIDE



ANATOMY OF THIS WINDOW

I WILL REFER TO THIS PICTURE AS THE ANATOMY PANEL AND REFER TO THE CIRCLED NUMBERS IN THE REST OF THIS "HOW TO".

HERE IS WHERE YOU NAME AND CREATE THE CODE SET

THIS IS WHERE YOU SELECT THE CODES YOU WANT IN YOUR SET. USE SHIFT AND APPLE WHILE CLICKING TO EXTEND THE SELECTION

THIS PANEL SHOWS EXISTING CODE SETS

THIS PANEL SHOWS THE CODES YOU WANT TO ADD TO THE CODE SET, OR THE CODES IN THE SELECTED CODE SET...

USE THESE BUTTONS TO ADD THE SELECTED CODES TO YOUR CODE SET

2.

CREATING A CODE SET STEP BY STEP...

START IN LIST (1) (SEE ABOVE). SELECT THE CODES YOU WANT IN YOUR SET

I'VE SELECTED DISCONTINUOUS CODES USING THE APPLE (AKA COMMAND) KEY

3.

2

ct Regex Def

liance

> quantity

> access

> authority

> coercion

> computers

> deception

> discomfort

> disjoint

> national

> perception > counselling

> physical

> pressure

> profit

> quality

> race

neg

neg3

neg4

neg5

negatives

negatives2

positive

12

Select codes

Add >

Add all >>

< Remove

<< Remove all

FROM THE BUTTONS LABELED (2) IN THE ANATOMY PANEL, CLICK "ADD" TO MOVE THE CODES TO YOUR FUTURE CODE SET

4.

negatives2

positive

Selected codes

date

details > quantity

ethics > access

ethics > authority

ethics > coercion

ethics > computers

ethics > deception

Add >

Add all >>

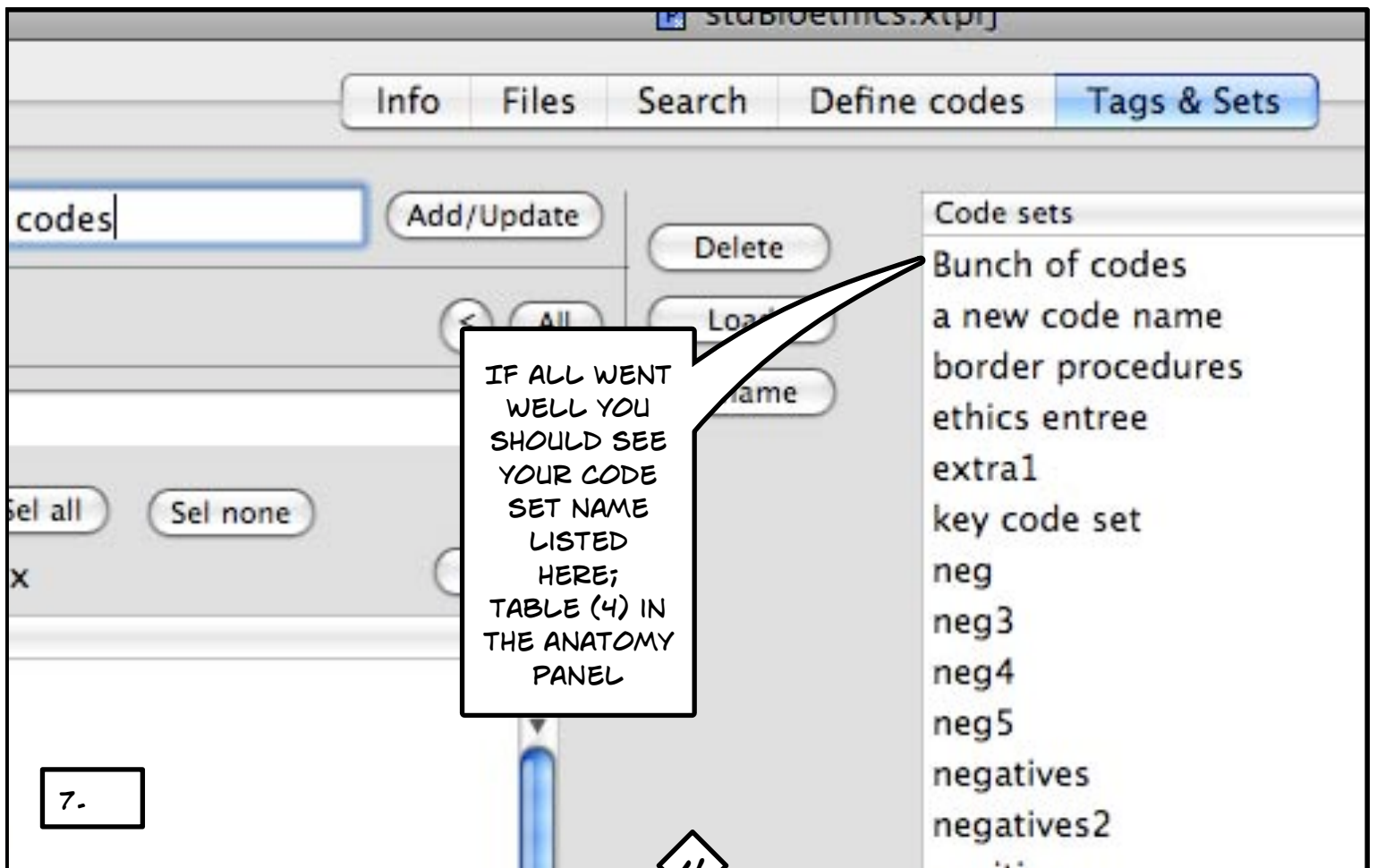
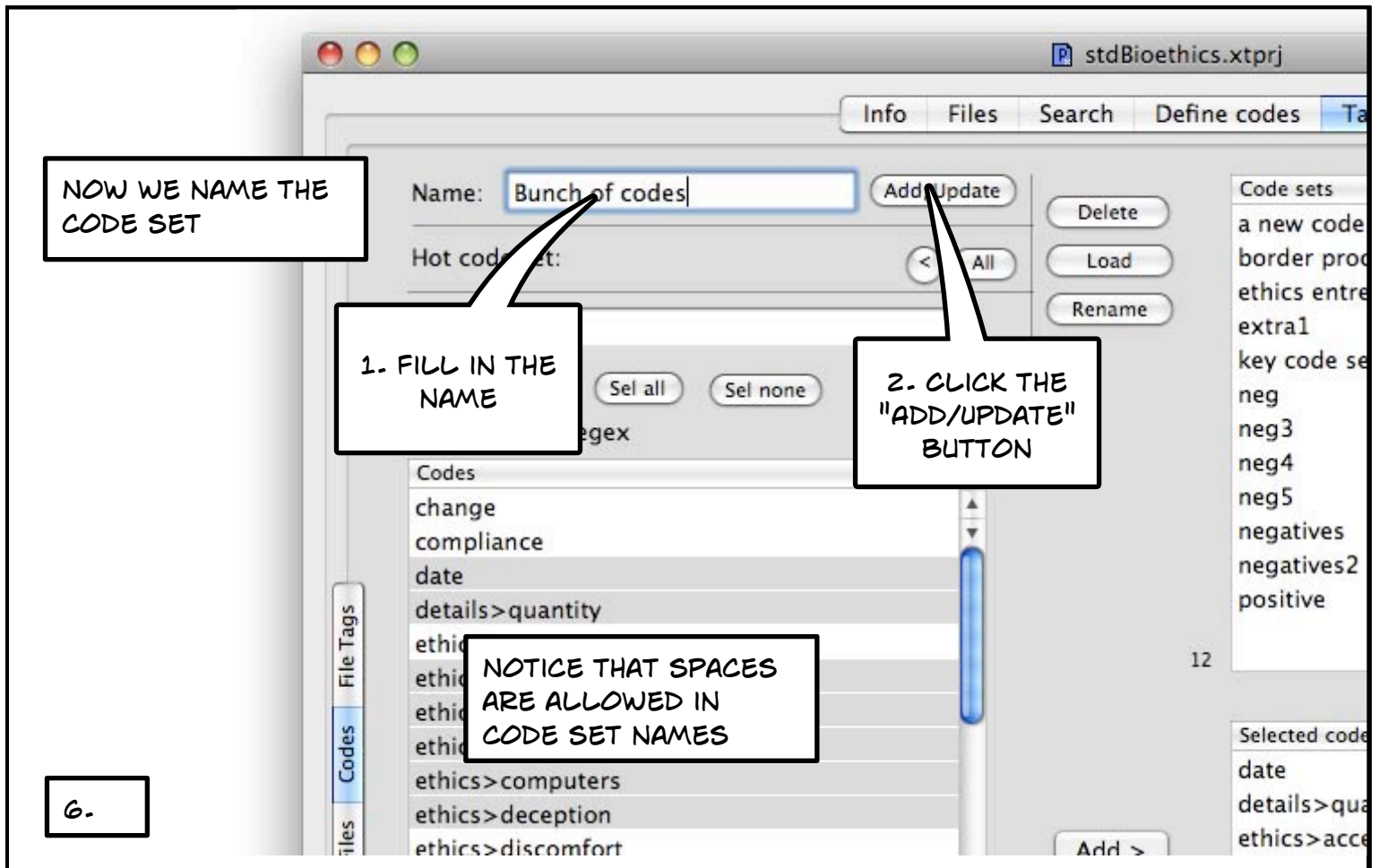
< Remove

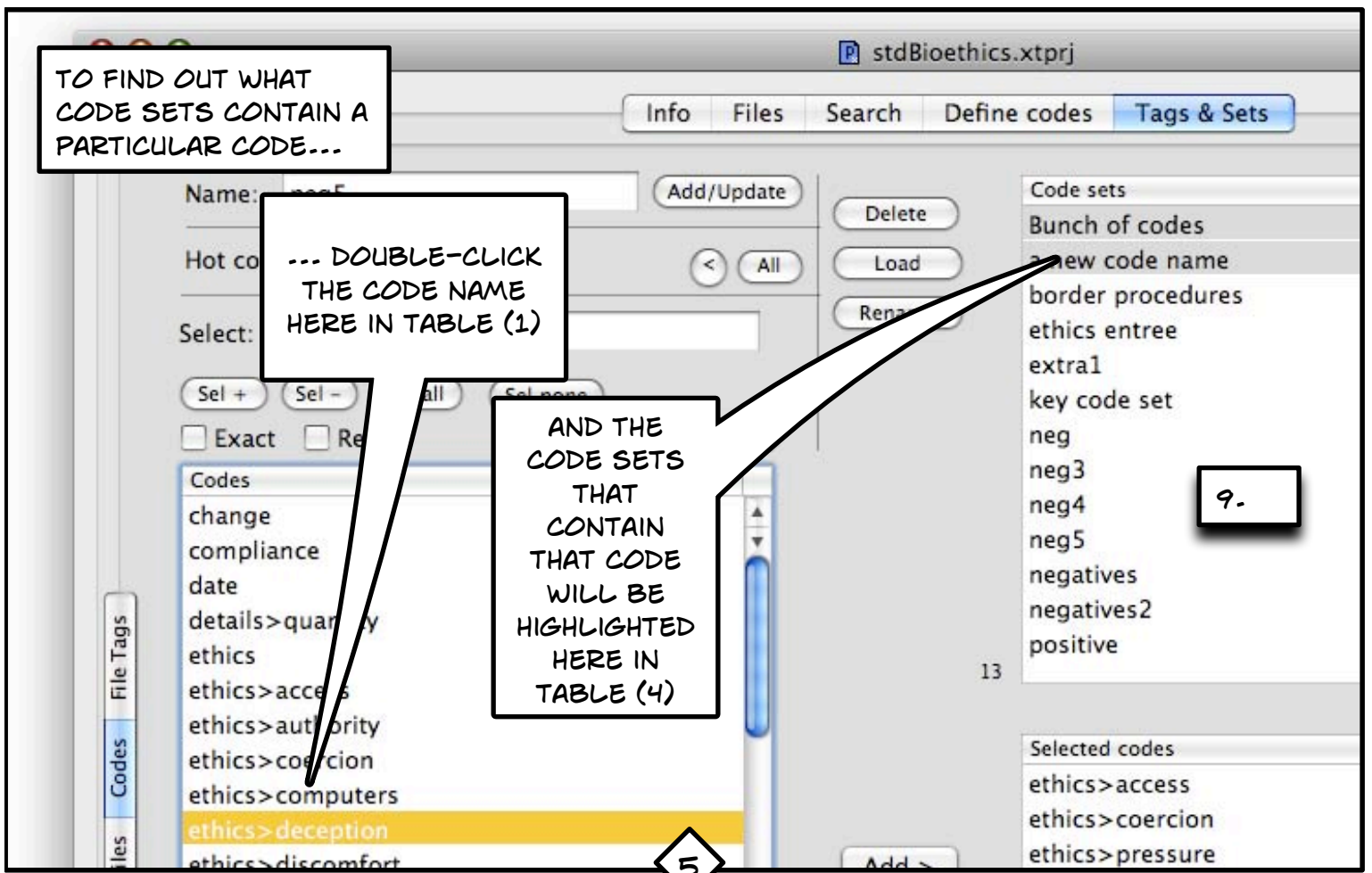
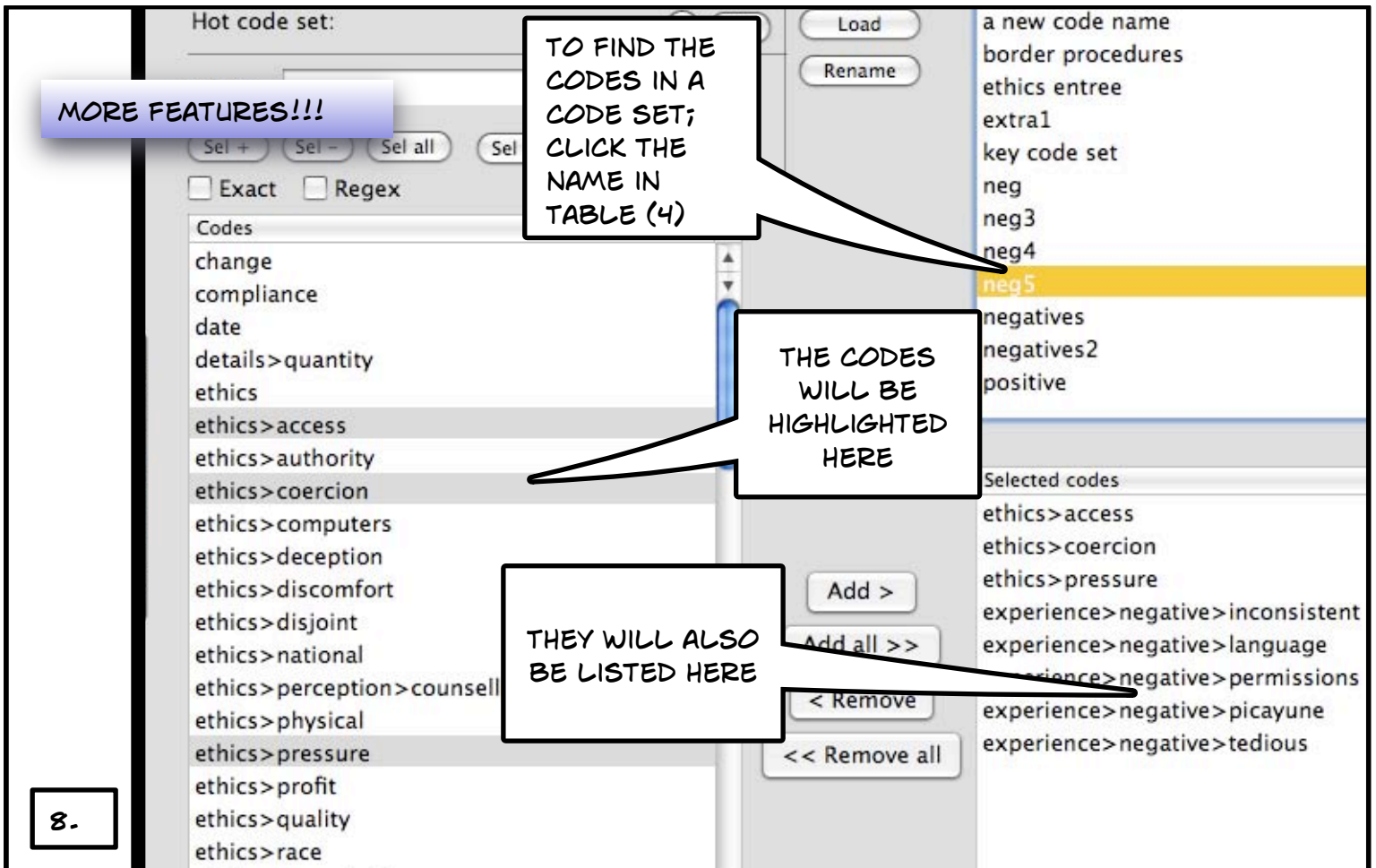
<< Remove all

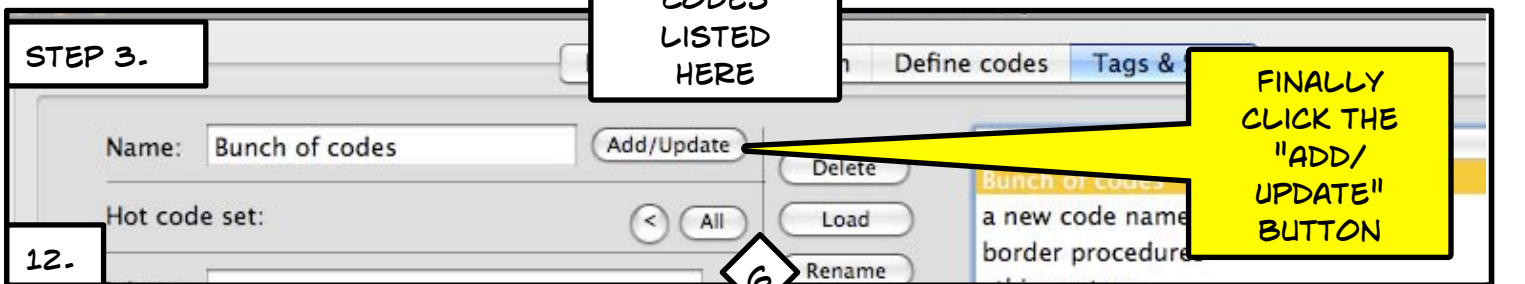
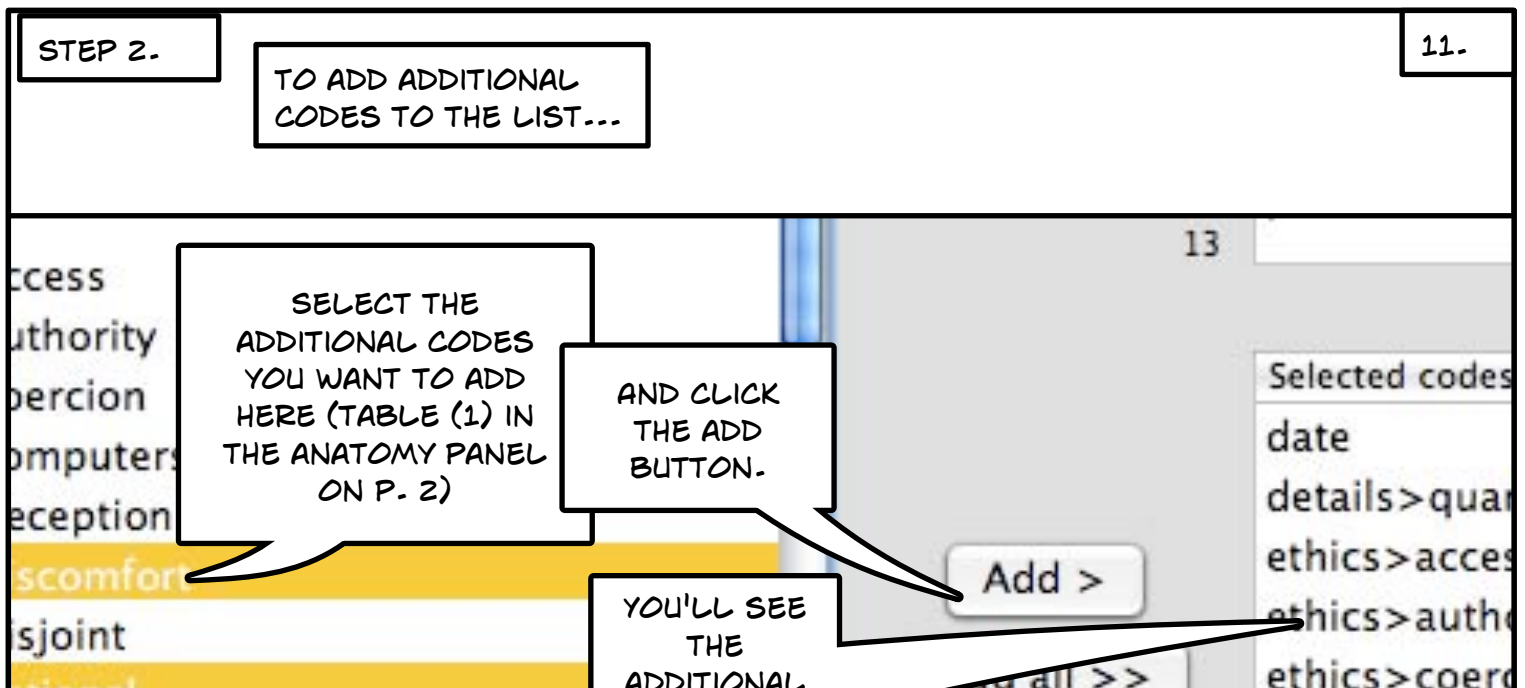
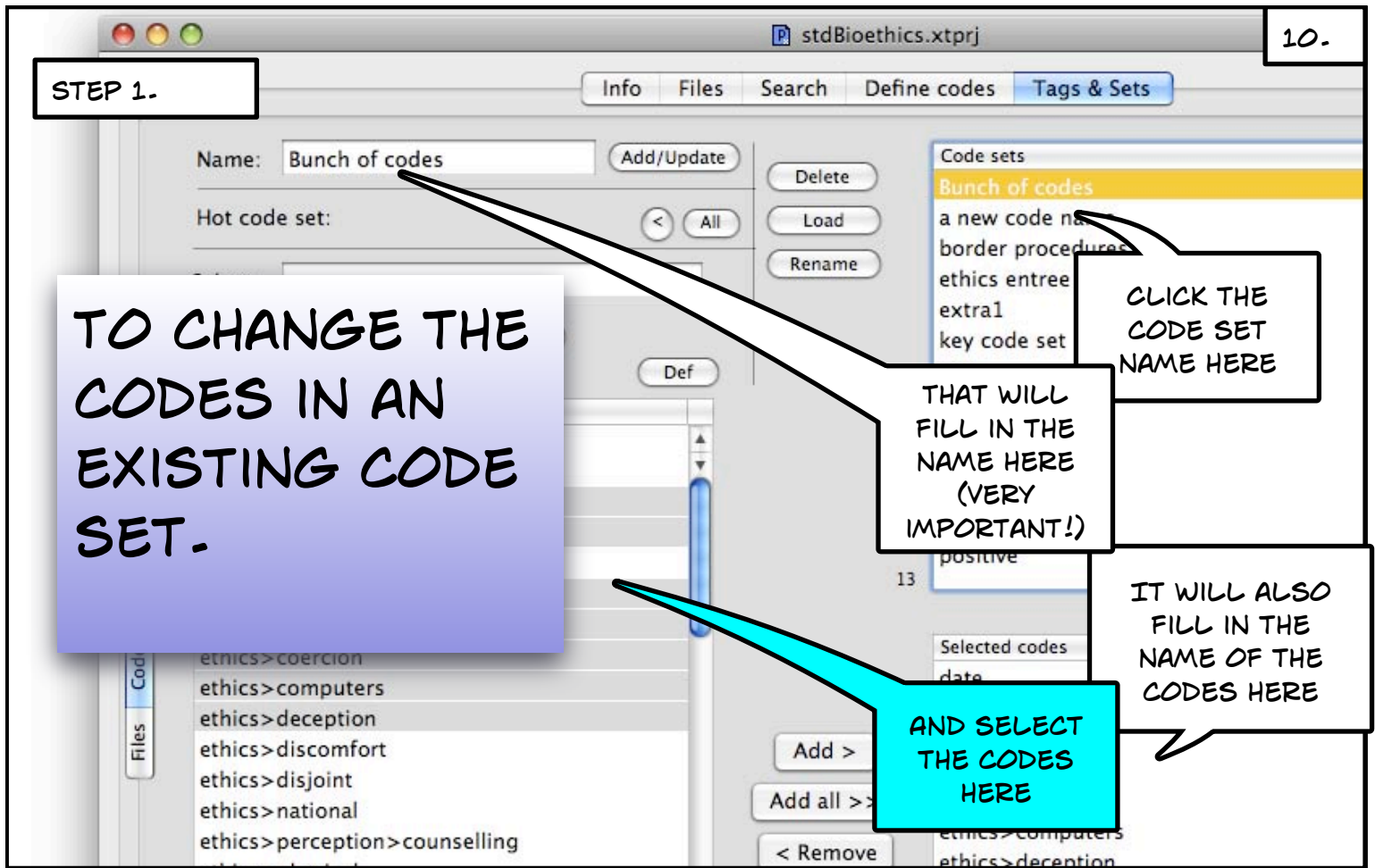
YOUR CODES SHOULD NOW BE LISTED IN THE SELECTED CODES PANEL. (THIS IS TABLE (3) IN THE ANATOMY PANEL)

3

5.







TO REMOVE CODES FROM A CODE SET...

stdBioethics.xtprj

Info

...START BY FOLLOWING STEP 1 ON THE PREVIOUS PAGE

THEN: SELECT THE CODES YOU WANT TO REMOVE FROM THIS TABLE

THEN HIT THE REMOVE BUTTON...

THE REMOVE BUTTON!

YOU SHOULD SEE YOUR CODES DISAPPEAR FROM THIS LIST

FINALLY, MAKE SURE THE NAME OF THE CODE SET YOU WANT TO CHANGE IS FILLED IN (SHOULD BE FILLED IN FROM STEP 1) AND CLICK THE "ADD/UPDATE" BUTTON

1
C
O
O
P
E
R
A
T
I
O
N
S
P
R
O
M
S

TO LIMIT THE CODES VISIBLE IN DOCUMENTS FOR CODING TO A SPECIFIC CODE SET...



Codes: border procedures
procedures>hypothetical
procedures>outside
procedures>unclear

{speaker}:
you just start out by saying when your
with the I.R.B. process

{speaker}:
(here specifically) uh

{speaker}Matthew{/speaker}:
Certainly comparing you know what
they've places

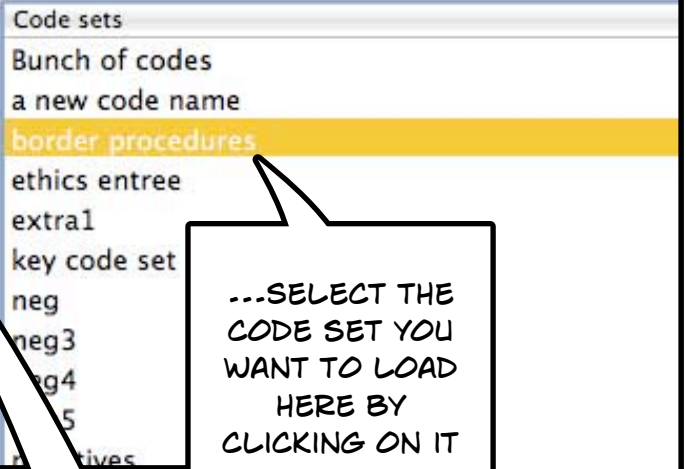
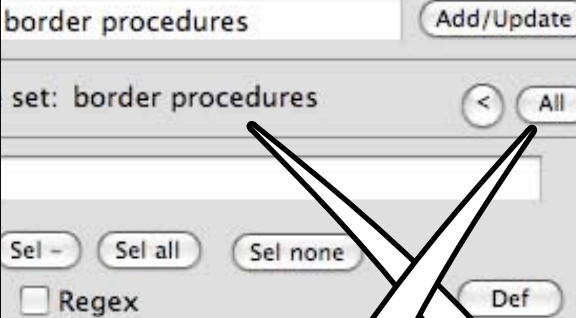
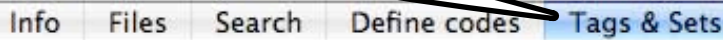
CODE SET NAME IS HERE

{speaker}Jay{/speaker}:
Well my first IRB journey began, when I was
preparing dissertation.

ONLY THOSE CODES ARE LISTED HERE

{speaker}:
what in that?

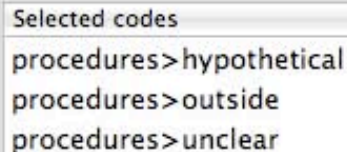
IN THE WORKBENCH, IN THE TAGS & SETS TAB, UNDER CODE SETS...



...SELECT THE CODE SET YOU WANT TO LOAD HERE BY CLICKING ON IT

THEN CLICK THE LOAD BUTTON

VOILA! NOTICE THE NAME OF THE CODE SET YOU LOADED IS DISPLAYED HERE



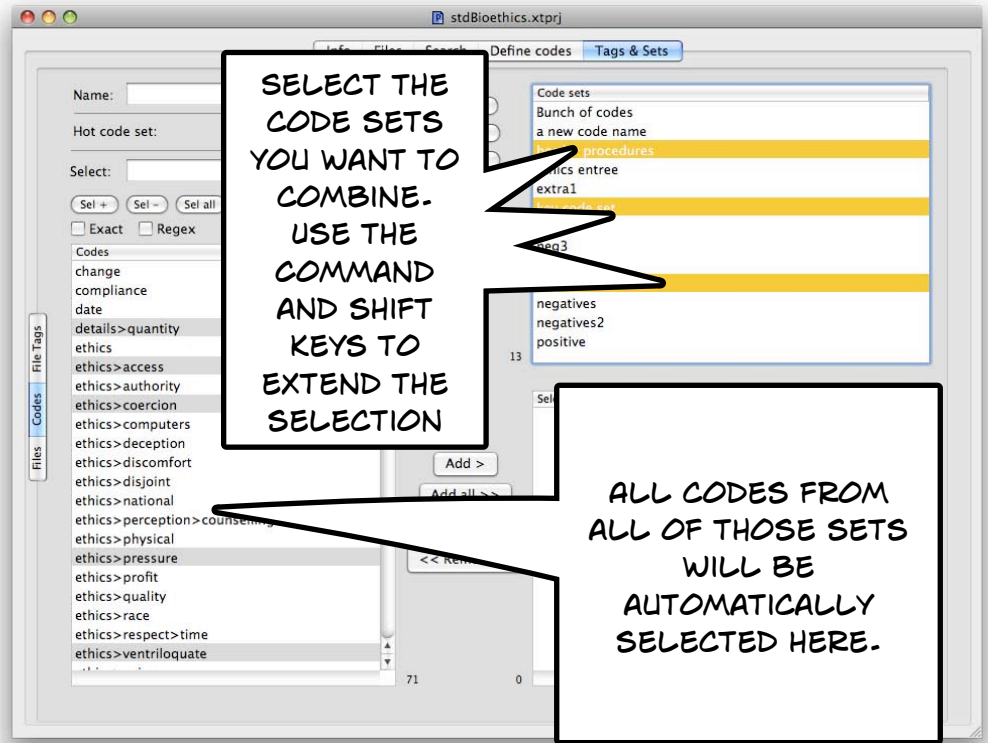
TO UNDO THIS AND SEE ALL CODES LISTED CLICK THE ALL BUTTON

TO COMBINE
MULTIPLE CODE SETS
INTO A NEW CODE SET

SELECT THE
CODE SETS
YOU WANT TO
COMBINE.
USE THE
COMMAND
AND SHIFT
KEYS TO
EXTEND THE
SELECTION

ALL CODES FROM
ALL OF THOSE SETS
WILL BE
AUTOMATICALLY
SELECTED HERE.

16.



1. CLICK THE
ADD BUTTON

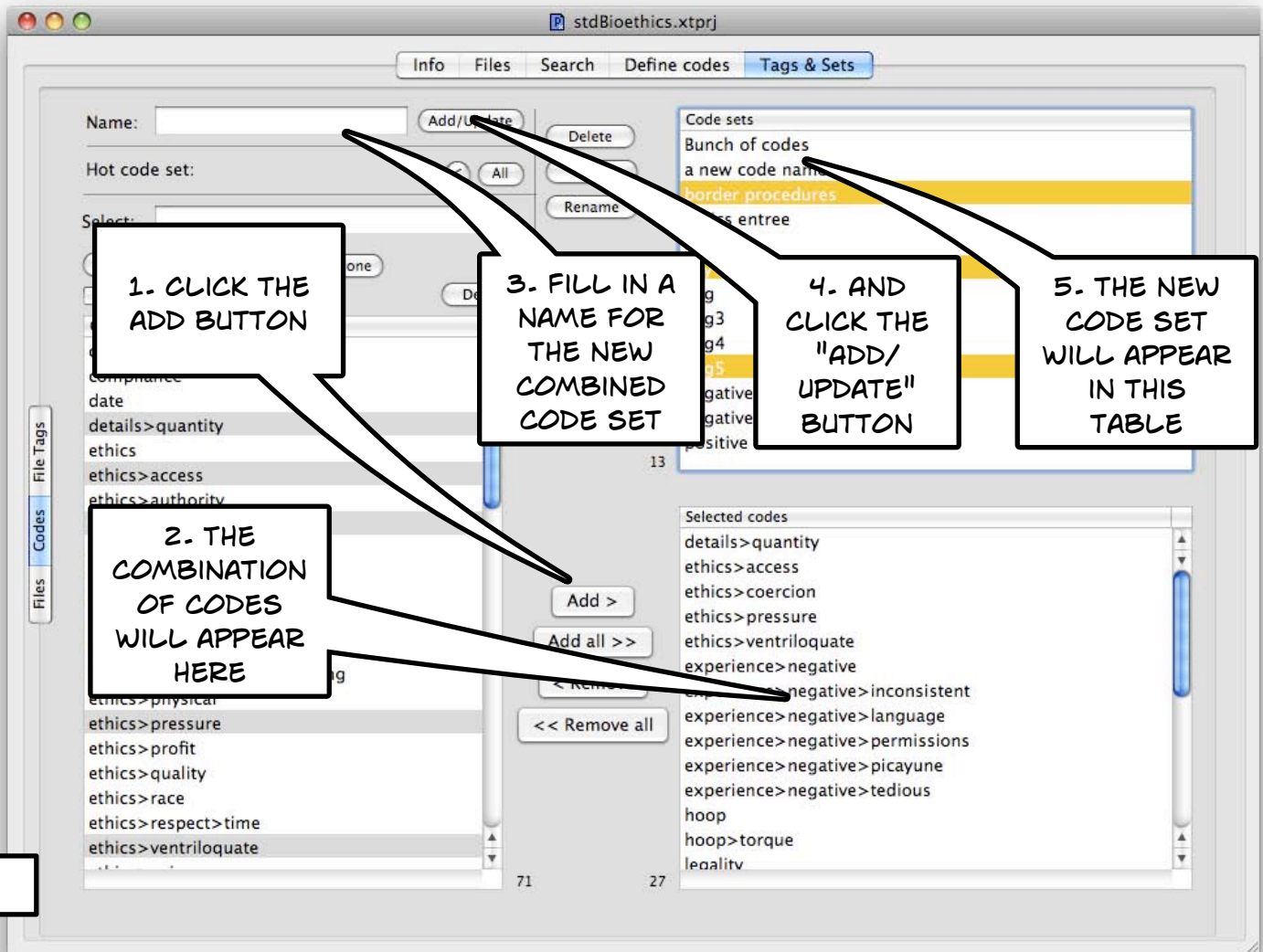
2. THE
COMBINATION
OF CODES
WILL APPEAR
HERE

3. FILL IN A
NAME FOR
THE NEW
COMBINED
CODE SET

4. AND
CLICK THE
"ADD/
UPDATE"
BUTTON

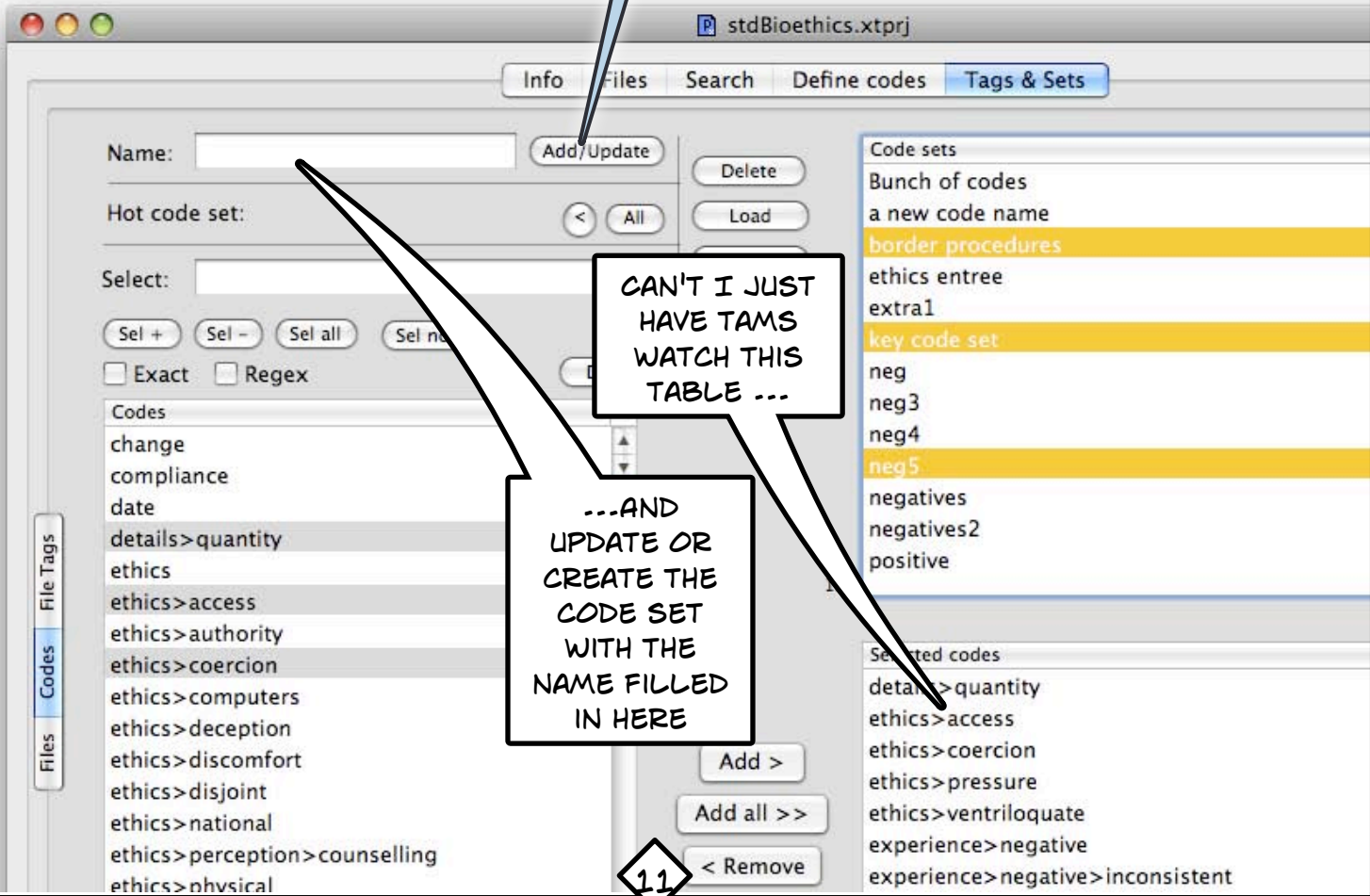
5. THE NEW
CODE SET
WILL APPEAR
IN THIS
TABLE

17.



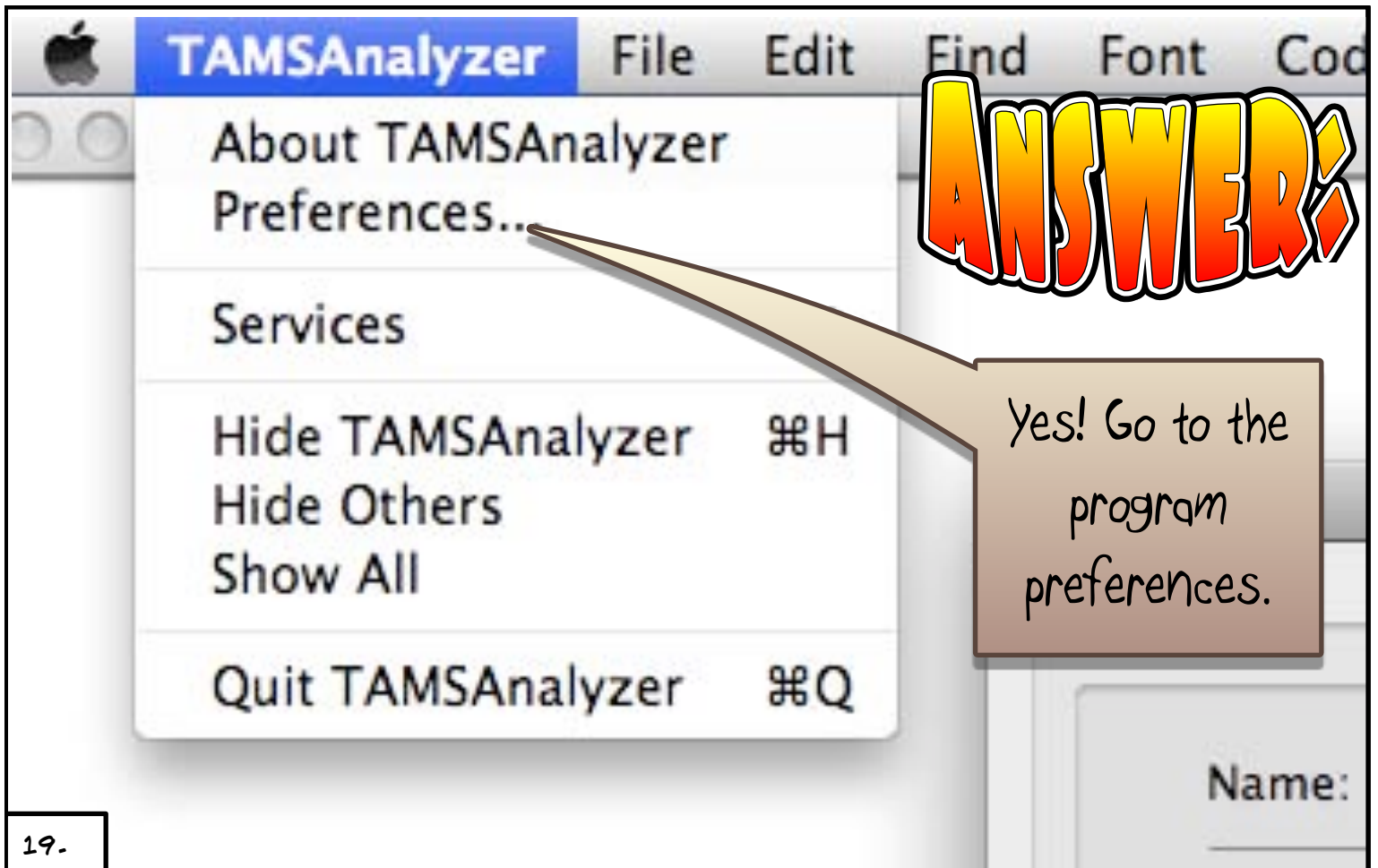
QUESTION...

DO I ALWAYS NEED TO CLICK THIS "ADD/UPDATE" BUTTON?

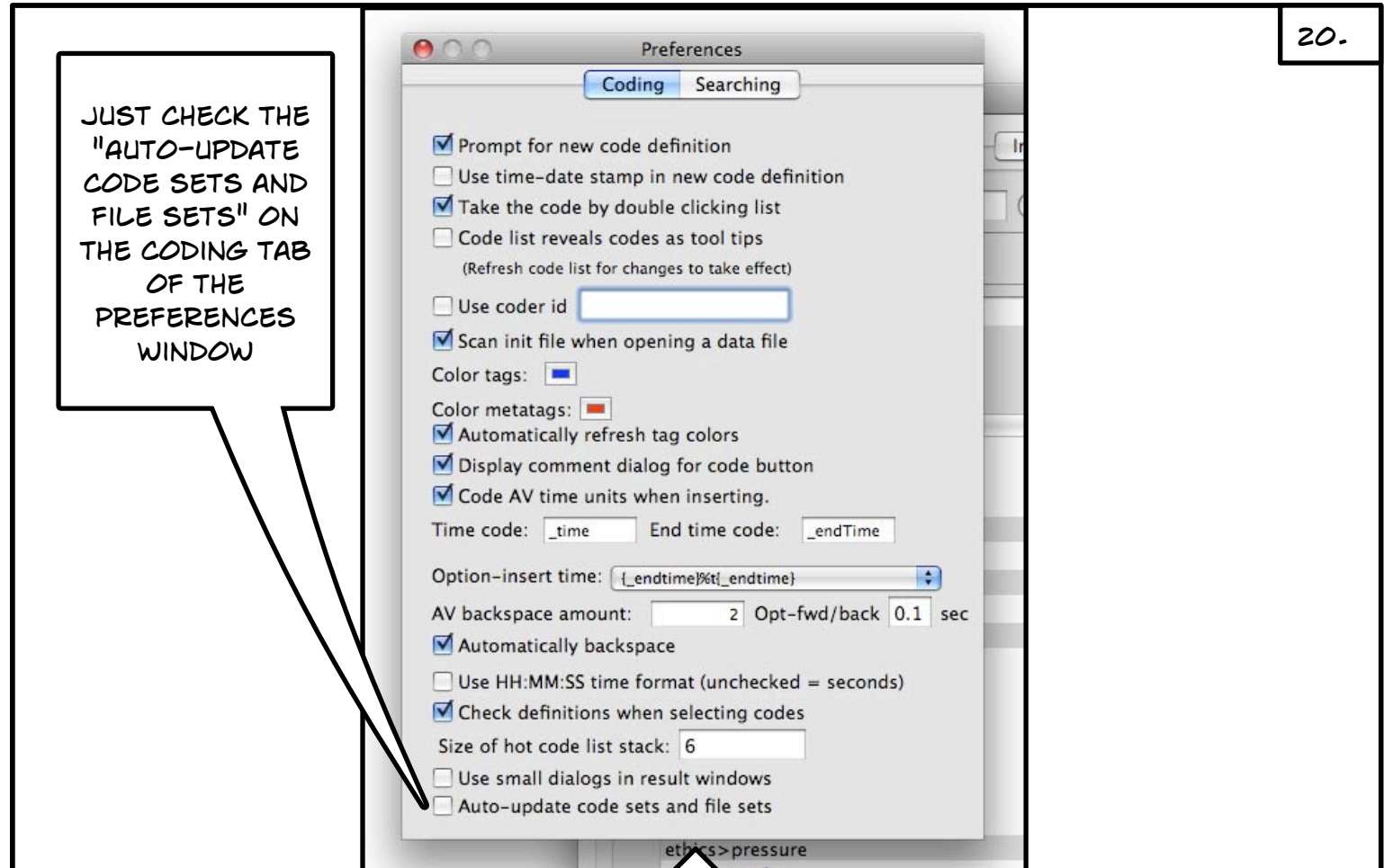


CAN'T I JUST HAVE TAMS WATCH THIS TABLE ...

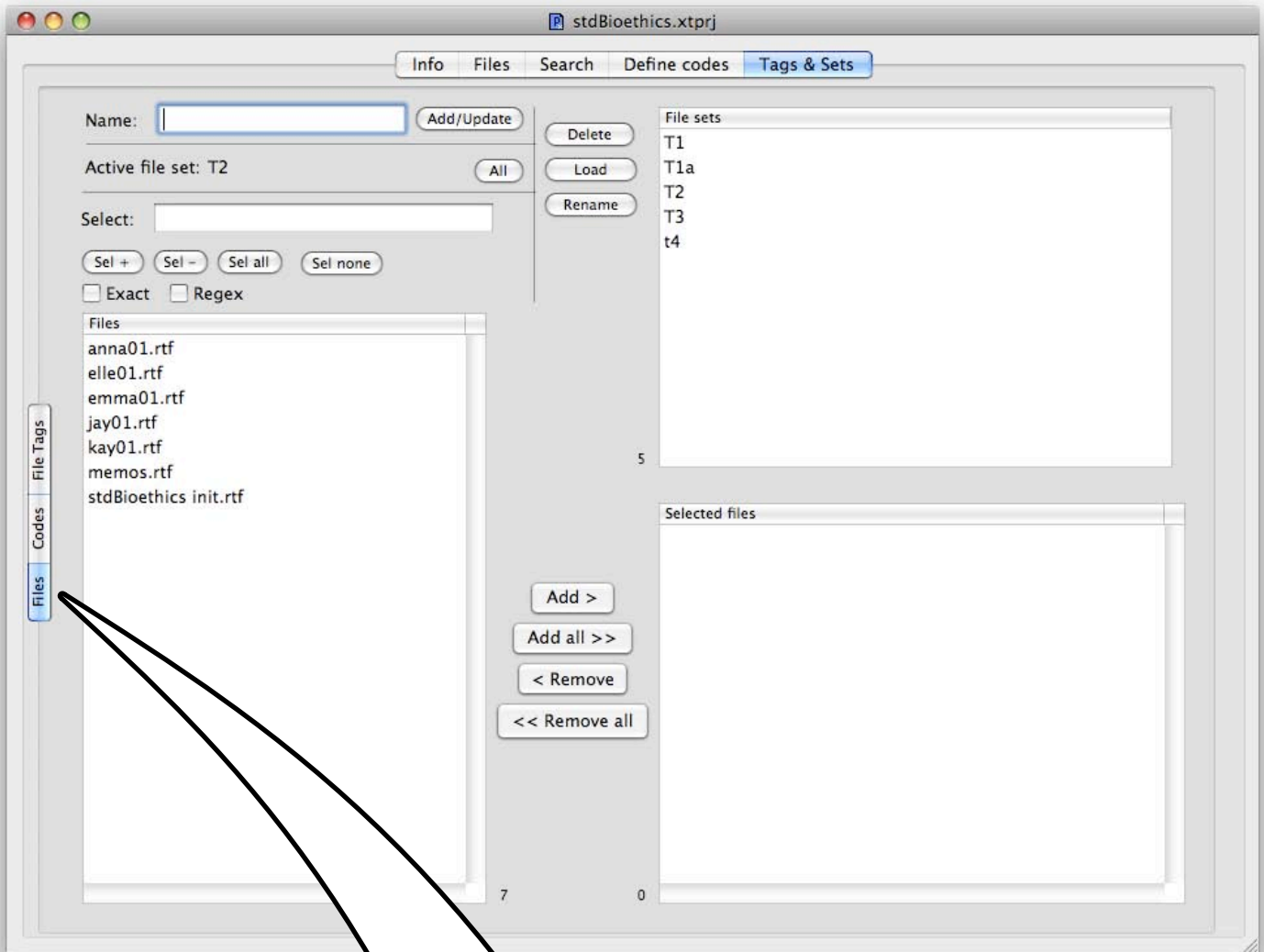
...AND UPDATE OR CREATE THE CODE SET WITH THE NAME FILLED IN HERE



19.



20.



EVERYTHING I'VE DESCRIBED
IN THIS "HOW TO" ZINE ALSO
WORKS IN THE FILES TAB OF
THE "TAGS & SETS" TAB